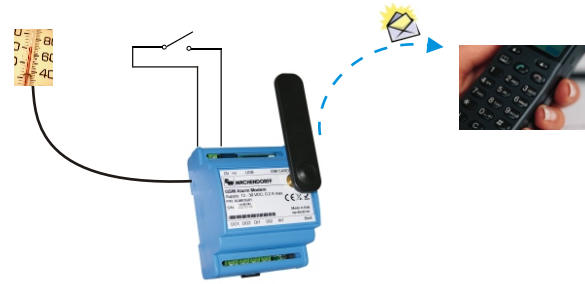


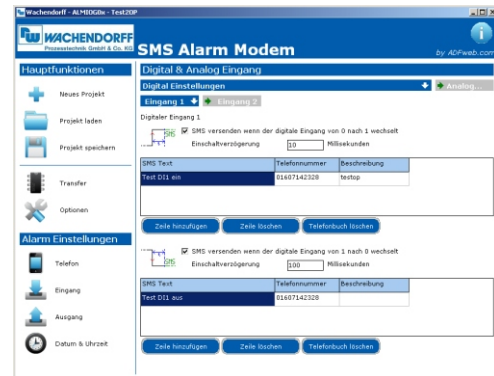
GSM Alarm-Modem

- SMS message on digital or analogue input
- Remote switching of digital outputs via SMS
- Authentication by telephone number and password
- Integrated real time clock with battery buffer
- High temperature range



Schematics

The configurable alarm modem ALMIOG01 is an easy but very comfortable alarm messenger, which is able to send status messages directly to your mobile phone. Via two digital or the analogue input you will be directly informed about value changes. You can switch the two integrated relay outputs by SMS or phone call (freecall). The alarm modem can be easily programmed with a special software via USB-port.



Software configurator

Communication: 1 x USB

Supply

Power supply: 12 to 30 V DC 10 %, 4 Watt
 12 to 18 V AC 10 %, 4 VA, 50/60 Hz

Cable cross section: 1,5 mm²

Digital inputs

Number: 2, galvanic isolated
 Switching direction: source input
 DC input: max. 30V
 Signal voltage "0": <3VDC
 Signal voltage "1": >8VDC
 Cable cross section: 1 mm²

Relais outputs

Number: 2, galvanic isolated
 Contact type: normally open
 Working range: 5 to 24VDC; 250 mA max
 Cable cross section: 1 mm²

Analogue inputs

Number: 1
 Resolution: 10 bits
 Input range: 0 to 10 V DC
 Cable cross section: 1 mm²

Modem

GSM/GPRS: 850/ 900/ 1800/ 1900 MHz

Ambient conditions

Temperature: Operation: -20 °C to +70 °C
 Stock: -20 °C to +70 °C
 Humidity: 10 % to 80 %, non condensing

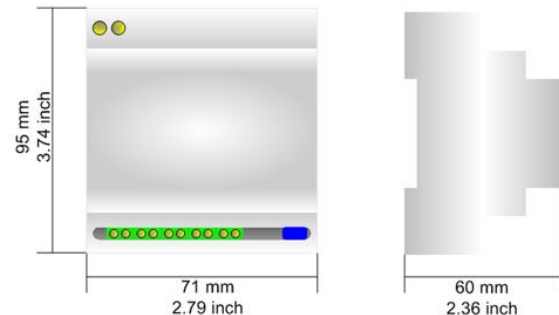
Housing: robust plastic case

Protection class: IP20

Weight: approx. 200 g

Mounting: Mounting on DIN-rail

Included in delivery: Modem, antenna, software, operating manual



Dimensions



ALMIOG01

ALMIOG02

Order details

Type	Order-No.
Alarm modem with 8 cm dipole antenna	ALMIOG01
ALMIOG01 with additional mobile antenna, 5m cable	ALMIOG02
Accessories	
Software configurator	ALMIOG0x
External power supply, 230 VAC/24 VDC	PS24V03AA
Programming cable, USB-A to USB-B, 1,8m cable	KABUSB21
Mobile Antenna, 5 m cable	WEW40902B